

A photograph of three children sitting on a large blue beanbag chair in a library or reading area. The child on the left is wearing blue 3D glasses and reading a book titled 'DINOSAURS'. The child in the middle is reading a book titled 'Who Are the Last of the Jedi?'. The child on the right is reading a book titled 'SOCCER CATS'. The background shows shelves with various books and educational materials.

AN ENGINE FOR SPIRITUAL AND SOCIAL CHANGE

BECAUSE EVERY KIDS MATTERS

2017-2018 ANNUAL REPORT

CONTENTS

- 03** Letter From The CEO
Mission & Vision • History • Our Industry & Future
- 07** Ministry Focus
Values • Activities • Outcomes
- 12** Board Leadership
Meet The Board of Directors
- 17** Staff Leadership
Meet The Team Behind Everything
- 20** By The Numbers
Bird's Eye View on Company's Financial Position
- 23** Changing Generations
The Success Story of Latasha Sanders

www.lovecamedown.com

LETTER FROM THE CEO

Greetings from the Mississippi Delta,

We believe strongly that every kid matters. Children mattered to Jesus in very special ways and our desire is to treat them as Jesus would. Our desire is that the children we interact with know the real Jesus and not a watered down version of Him. Long-lasting and sustainable change happens through faith in Jesus. In the Gospels, we see God enter into the space of mankind and engage in all things "social" and when he does, things change because people change. Systems and parties are incapable of sustainable, long-lasting change because they were never designed that way. We believe that a changed heart leads to a changed life and real change is found in Jesus.



MICAH 6:8

"No, O people, the Lord has told you what is good,
and this is what he requires of you: to do what is
right, to love mercy, and to walk humbly with your
God."

OUR ACTIVITY

Over the past year through RE>DIRECT, a holistic after-school program, we have been able to reach into the lives of 24 students in positive and powerful ways. When most people think about an after-school program, they immediately think about homework and while that is true, RE>DIRECT is so much more than that.

Providing a solid foundation to develop successful leaders

Our dynamic and context is within a rural, all-black, community in which more than 50% of the students we work with are considered to be living in "poverty." Entitlement brings about another set of challenges and one of our goals is to teach kids that God created us to be empowered, not entitled. We see this clearly before the fall in Genesis 3. Productivity was happening with man and woman because God designed us that way. Every day we breathe into that reality as we go about our activities. Outcomes are important but a changed heart for Jesus is critical.



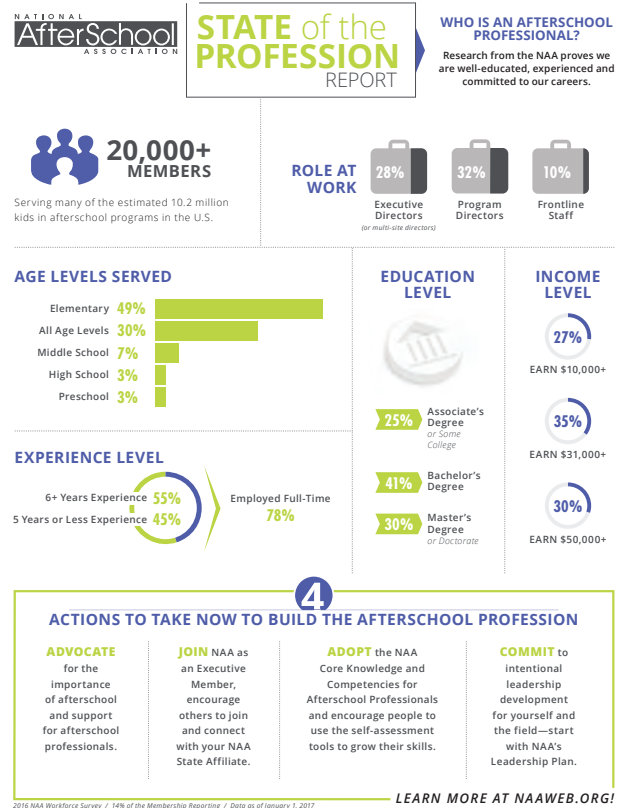
CELEBRATING 5 YEARS

RE>DIRECT is celebrating our 5 year anniversary this year and it is incredible to see how we have grown, expanded, and increased capacity. In the first year, we went from leading with love only and not knowing what we were doing with 7 students, to having 25 students and a team of 5 qualified staff members. We went from trying to make things work to knowing that they do. We progressed from little structure to a solid functioning program that is yielding holistic results in the lives of children.

ABOUT THE AFTER SCHOOL INDUSTRY

According to the National AfterSchool Association, there are an estimated 10.2 million students in after-school programs in the U.S. 49% of the students that are served are elementary age.

Mississippi, as well as other states, have figured out that there is a direct correlation between fourth (4th) grade state test results and the probability of a child ending up in prison. Our state uses those test results in an effort to determine how many future prisons need to be built. We decided that is unacceptable. In our program, we reserve 75% of our spots for those that are 4th grade and below in an effort to change the prison narrative.



OUR FUTURE

A major goal, as well as obstacle that we currently face, is expansion. We can do more by helping more students. Our current facility (not our own), has time and space restrictions. While grateful for the space, we are confined by space as well as their hours of operation.



The goal is to build a Youth Center geared toward the holistic development of children. This state-of-the-art facility would not only allow us to continue RE>DIRECT, it would give us the chance to expand it. One frustration every year is a waiting list of kids that we know we won't be able to bring into our program. This allows us to increase capacity. It also provides us with the chance to help student-athletes after their practices.



Athletes would be able to come to the facility after their practice and receive homework help, ACT prep, and more. In addition, we would partner with all area churches to create an incredible Wednesday night youth group. We envision Friday nights being a time where kids can come after games, hang out, have some snacks, play games, and hear the gospel.

Two other programs that we have started to develop are the Delta Leadership Academy and the Delta Music Academy. Until we have a location of our own, most of this remains in limbo. Over the next 8 months, we are pushing extremely hard to bring this facility to a reality. With three (3) acres of land ready, we are closer than ever.

God's Blessings,

Handwritten signature of Phil Schank.

Phil Schank- President & CEO

MINISTRY FOCUS

C2k Ministries Inc. has always had a mission of being an engine for spiritual and social change. As mentioned in the CEO letter, RE>DIRECT, our holistic after-school program is the primary way that we are accomplishing that. In addition, we are part of the first, intentional, multi-ethnic church in the Mississippi Delta called Crosstown Fellowship Church. Both help us facilitate and carry out the mission of C2k Ministries Inc.



RE>DIRECT has a mission of providing a solid foundation to develop successful leaders. We carry out this mission by providing the necessary resources to develop strong spiritual, physical, social, and academic skills. Being a holistic program, RE>DIRECT focuses on developing the whole student, not just a place for homework.

CORE VALUES

- **Christ-Centered-** All we do is centered on Jesus. (Isaiah 45:5, 2 Timothy 2:16-17, Proverbs 22:6)
- **Ministry Led-** The program is led through and by the ministry
- **Holistic-** Spiritual, physical, social and academic development
- **Leadership Focused-** Provide the necessary environment to produce leaders
- **Long-Term Approach-** Process of 10-15 years with a student. Not a quick fix mentality
- **Strong Expectations-** We expect our students to rise to the expectations set for them

Bible Time

Biblical Teachings are something dedicated to Wednesday afternoons. We take a passage from the Bible to teach concepts, reinforce behaviors and more. The gospel of Jesus Christ is shared daily but strongly proclaimed on Wednesdays. Each student is given New Testament Bible with Psalms and Proverbs at the start of the year..

Reading Comprehension

In addition, we use a reading intervention program called Fast ForWord in which each student spends 40 minutes listening, reading and comprehending. This program, over the past 2 years, has increased reading grades in all students involved; some increasing as much as 2-grade levels.

STEM Team Projects

STEM stands for science, technology, engineering, and mathematics. Our students are learning 21st century skills through hands on STEM projects every month.



Providing Incentives

We teach money management skills in which students earn RE>DIRECT Dollars for good behavior and grades. They have to be able to balance bank accounts, make deposits, and do it accurately. They use those RE>DIRECT Dollars to buy real items through the RE>DIRECT store. Those items range from pencils to computers and trips and are used as an incentive.

Art & Creativity

Art projects are provided through a partnership with the Delta Arts Alliance. They provide our program with a resident artist who teaches our students the fundamentals of art once a week. Arts are important as they are not offered in our school system. Arts are a powerful way to unlock creativity and dreams.



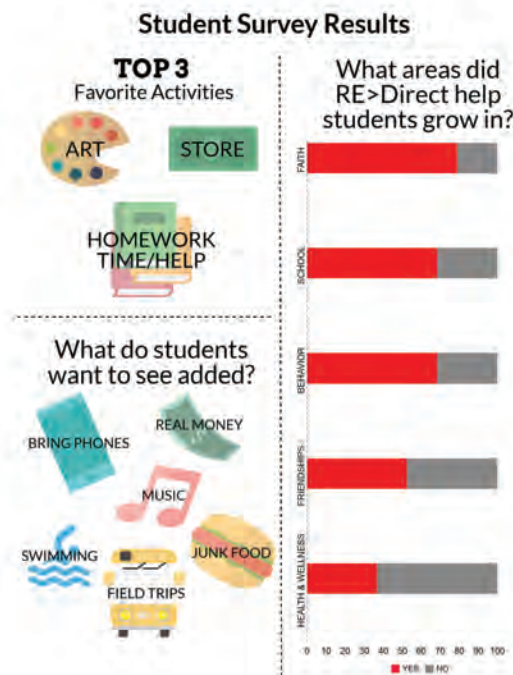
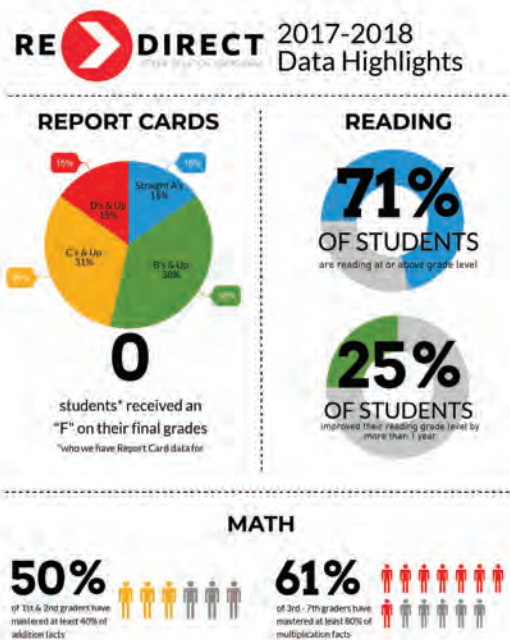
Rocket Math

Rocket Math is a fact fluency program with goals individualized to each student's writing speed. While younger students are working on simple addition, older students might be working through integers. For one-minute, students try to answer as many correctly as possible.

Healthy Food

Healthy food is offered daily with kids getting a protein (choice of string cheese, turkey sandwich, or peanut butter and jelly sandwich), a fruit and water. Our food is bought and purchased through Kroger and is organic. We believe that healthy food is critical to proper brain function.

OUTCOMES AT A GLANCE



OUTCOMES IN DETAIL

Math (Data from Rocket Math)

- 100% of students made progress toward their 2 Minute Goals
- 76% of students are more than 50% to their 2 Minute Goals
 - 47% of students are more than 75% of the way to their 2 Minute Goals
 - 17% of students have met their 2 Minute Goals
- 50% of students in 1st & 2nd Grade have mastered at least 40% of Addition Facts.
- 61% of students in 3rd – 7th Grades have mastered at least 80% of Multiplication Facts

Literacy (Data from Fast Forward & Reading Assistant Plus Assessments)

- 71% of students are currently reading at or above grade level.
 - 40% of students tested in Fall 2017 were reading below grade level.
 - 29% of students tested in Spring 2018 were reading below grade level. (We reduced the number of students below grade level by 11%.)
- Of the students we have Fall 2017 and Spring 2018 data for, this school year alone they have made the following gains in their Grade Level Equivalent (the grade level they are reading at.)
 - 25% of students improved their reading level by up to .5 year
 - 42% of students improved their reading level by .6 – 1 year
 - 8% of students improved their reading level by 1 – 1.9 years
 - 17% of students improved their reading level by more than 2 years
- Since beginning Fast ForWord in Fall 2016, students have made the following gains in their Grade Level Equivalent (the grade level they are reading at.)
 - 6% of students improved their reading level by up to .5 year
 - 24% of students improved their reading level .6 - 1 year
 - 24% of students improved their reading level by 1.1 – 2.0 years
 - 18% of students improved their reading level by 2.1 – 3.0 years
 - 6% of students improved their reading level by 3+ years

OUTCOMES IN DETAIL

School Performance (Data From School Report Cards)

- 100% of students (who we have report card data for) improved their grade in at least 1 subject area.
 - 38% improved their English/Language Arts or Reading grade
 - 31% improved their Math grade
 - 46% improved their Science grade
 - 54% improved their History/Social Studies grade
- 31% of students (who we have report card data for) improved their grades in 2 subject areas.
- 8% of students (who we have report card data for) improved their grades in 3 subject areas.
- 8% of students (who we have report card data for) improved their grades in 4 subject areas.
- On their most recent Quarterly Report Cards:
 - 7% of students received all A's
 - 40% of students received A's & B's (47% of students have B's and better)
 - 20% of students received A's, B's, & C's (67% of students have C's and better)
 - 13% of students received A's, B's, C's, & D's (80% of students have D's and better)

BOARD LEADERSHIP



Dr. Charles Moore- Board President

Charles (Chuck) Moore, Executive Director, Impact Christian Schools, and Principal, High Point Christian School, in Madison Wisconsin. Chuck earned a Bachelor of Science in Education, a Master of Science in Educational Administration, and a Ph.D. in Educational Leadership and Policy Analysis from the University of Wisconsin – Madison. His 30 plus years of teaching and administrative experience are informed by his education and his state certification as both a teacher and principal. Chuck is also an adjunct professor at Marian University Wisconsin, is an “Honorary Old Boy” (graduate) of St. John’s Northwestern Military Academy, and is a member of the University of Wisconsin Marching/Varsity Band Alumni Association. Chuck and his wife Mary are the parents of two wonderful adult married children and one grandchild.



Seth Still- Board Vice President

Seth Still believes in helping people write their story. He is a combat veteran who understands the power of story in helping people find purpose, meaning, and passion. Seth is a sought after public speaker, coach, and planner. He is a regular consultant for those seeking to pursue racial healing and reconciliation in their organization or business. Seth is an ordained Minister and is the pastor of Crosstown Fellowship Church. He is passionate about his wife and three children and is grateful to be doing meaningful work he loves! Seth and Julie have three children: John Everette, James, and Anne Allen.

BOARD LEADERSHIP



Roger Yolo- Board Secretary

Retired mechanical engineer. Roger obtained a BSME at Washington State University and his MBA from the University of Puget Sound with a few classes from the University of New South Wales in Sydney, Australia. He met his beautiful wife Donna (also an engineer) on a construction site in Farmington, NM while they were both seekers. Just a few months after they were married they took a 4 year project assignment to Australia. They have 2 wonderful, married sons. The oldest was born in Australia and is now living in Las Vegas, NV and the other lives in Oshkosh, WI. Roger loves to go hiking to see Gods' work among the mountains and wild flowers.



Linda Dyke- Board Treasurer

Since 2008, Linda has been working with C2k Ministries as office manager, bookkeeper, and now Treasurer. She has an extensive business background - supporting the office, financial, investments, and property management in real estate companies owned with her husband John. Linda enjoys working with customizing accounting software to meet the needs of individual companies while looking ahead for their growth. Linda has a BA in Psychology from Rutgers University, and a minor in Applications Programming from New York University. She has a passion for paving the way for individuals with special needs and encouraging personal advocacy. In addition, "I find myself drawn to assisting young adults in finding their career path. There is so much to learn when choosing one's education for career purposes. The wisdom and encouragement from a trusted older adult is great encouragement during this challenging and uncertain time. I really enjoy working with young people and being witness to their talents." Linda and John have 4 children, enjoy biking, hiking, attending live performances, traveling, and doing anything that keeps them appreciating the great outdoors.

BOARD LEADERSHIP



LaToya Lee- Board Member

LaToya Lee is the owner and founder of Precision Grant Writing & Consulting Services, LLC, which has been serving the community for 5 years. She was previously employed by St. Gabriel Mercy Center, Inc., where she served as the Director of Advancement for over 6 years. LaToya has over 9 years of experience in the non-profit sector and has written numerous grants, which were funded. LaToya is a graduate of Mississippi Valley State University, where she attained her BS in Biology. She is also a graduate of Delta State University, where she attained her MS in Community Development. She is currently pursuing her Doctorate degree in Leadership and Management.



Monique Henry- Board Member

Monique grew up outside of San Francisco in Hayward, CA and began dating Doug in high school. She received her bachelor degree in Psychology from Stanford University, and her masters in Counseling from Arizona State University. She worked in a Child Crisis Center in AZ, in the foster care system in CA, and joined forces with the Child Abuse Prevention Fund when they moved to WI in 1992, serving on their Board of Directors and as chair of the Grants Review Committee. They have four adult kids. Monique loves to spend time near the water, gardening, working with her hands and playing with her five grandchildren.



Dr. Larry Haywood- Board Treasurer

Dr. Haywood is a life-long resident of Mound Bayou, MS. He has been married for 37 years to his wife Carrie. They have 3 children and 8 grandchildren. Larry retired from Baxter Corporation after 40 years and went on to get his Masters Degree from Jacksonville Theological Seminary. Currently Dr. Haywood is one of three founders of Crosstown Fellowship Church, and he serves as the Executive Pastor for Walk Of Faith Covenant Church.

BOARD LEADERSHIP



Dave Sonderman- Board Member

Dave served as board chairman for 4 years. Dave earned a BS in Electrical Engineering from UW-Madison and a Masters of Business from Marquette University. Dave has worked for Eaton Corporation for 32 years, has been married to Valle for 27 years and they have 3 wonderful children: Austin, Ashley and Joshua. Dave also serves on the No Regrets Men's Conference team which facilitates the largest men's ministry conference in the world and the Global Leadership Summit conference team.



Oneida Causley- Board Member

Ms. Oneida D. Causley is the daughter of Mrs. Barbara J. Causley and Mr. Maurice W. Causley. She's the youngest of four siblings. She attended I.T. Montgomery Elementary School and is a 1989 honor graduate of John F. Kennedy Memorial High School located in Mound Bayou, MS 38762. She attended Jackson State University in Jackson, MS and Delta University in Cleveland, MS and is currently enrolled in Ashford University. She is a member of Azion M.B. Church in Mound Bayou, MS, where she serves as recording secretary. She is currently employed at Bolivar County Regional Correctional Facility in Cleveland, MS as the Aftercare Pre-release Coordinator, assisting offenders who have completed the Alcohol & Drug Program preparing to go home. Prior to this she was employed by Mound Bayou Public/North Bolivar Consolidated School District for 17 years. She was also employed with Kroger in Cleveland, MS for 15 years. She is the proud mother of two children, Chelsee' L. and Anthony P. Jackson. She serves as co-sponsor of John F. Kennedy Memorial High School's Future Business Leaders of America (FBLA), a member of Mound Bayou Civic Club and chairperson for Mound Bayou Historic Preservation Commission. She's loves life and is a friend to many. Her motto is, "If at first you don't succeed, try, try again!"

BOARD LEADERSHIP



April Ellington- Board Member

April is the daughter of the late Duke Ellington and has been serving on the board since 2014. Ms. Ellington's invaluable support and dedication to our ministry have been a blessing. Her additional hard work and expertise in spearheading and producing an upcoming, multi-state fund-raising concert series will help equip our ministry with the necessary finances to aid in ensuring our mission continues.



Dale Sanders- Board Member

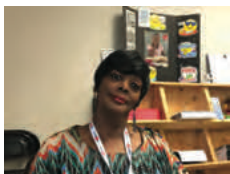
Dale met Phil in 2006 while he was a sound engineer and Phil a worship leader. That friendship grew and when Phil started a band in 2007, Dale joined them as their sound tech. That friendship continues even today. Dale obtained a BSIE from University of Wisconsin and an MBA from Marquette University. He worked 29 years for Briggs & Stratton and is currently working in Denver, CO in the Software Engineering / Apparel Decorating industry. Dale has two awesome adult children – Zacary who is in the Milwaukee area and Samantha who is also living in Colorado. C2k has been a VERY inspirational ministry for him and an important part of his life – proving that God has a plan for all of us

STAFF LEADERSHIP



Megan Munro- RE>DIRECT Program Director

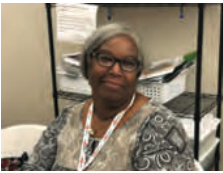
Megan grew up in Southeastern Wisconsin where both her parents are educators. She graduated magna cum laude from the University of Wisconsin - Whitewater with a Bachelor of Science in Education degree in Special Education. In the past ten years, Megan has worked in a wide variety of educational settings and has had the privilege of helping many children learn and grow. Six years ago she took a weekend trip to Mound Bayou to help Phil & Kym wrap Christmas presents, and she immediately began to fall in love with the community. In 2014 she left behind everyone and everything she knew in Wisconsin and followed God's call to move to the Mississippi Delta and do full-time ministry with C2k Ministries. She firmly believes that every child has the right to quality education, but that right isn't available to many children in the Mississippi Delta. Every child is capable of amazing things if they have the tools and strategies to succeed. She also knows that our public schools are overcrowded, overtested, and underfunded. At RE>DIRECT she can breathe into the lives of our students and give them opportunities that the public schools can not provide. In school, students learn academics, at RE>DIRECT students learn about life.



Linda Dorsey- Family & Child Coach

Linda lives in Mound Bayou, MS and is the Child/ Family Coach at RE>DIRECT After School Program. She was born in Chicago, Illinois. Linda is a blessed mother of 2 sons; her oldest passed on last year and her youngest lives in Mound Bayou. Linda went to high school partly in Mound Bayou but finished in Michigan. She has an A.A. Degree in Early Childhood; a Bachelor's Degree in Community Counseling from Delta State University; a Master's Degree in School Counseling from Delta State University. One unique thing about Linda is she loves children! Linda loves helping them, teaching them and nurturing them. She fell in love with RE>DIRECT from the very first day the doors opened and has been there since the start. Linda saw life come down to Mound Bayou, MS in a unique way with two beautiful people. She works with students/families RE>DIRECT serves, and it's incredible to see them grow academically as well as spiritually.

STAFF LEADERSHIP



Loise Fipps- Mentor Specialist

Loise currently works as a Mentor Specialist at RE>DIRECT and as a Substitute Teacher for North Bolivar Consolidated School District. She earned her Associate's Degree in Childhood Education from Coahoma Community College. She is also a Certified Tutor, in which she received her training through AmeriCorps. Loise helps students reach their goals by motivating them and providing them with resources to enhance their academic and social skills. She chooses to teach because she knows the struggles children face in our community. Her goals are to train and mentor, and with God's help, Loise makes that happen daily. She strives to do all that she can to help others reach their goals in life. Loise truly loves teaching! Her greatest joy is waking up each day and having the opportunity to teach a child to be the best that he or she can be! Loise says, "RE>DIRECT has been a great asset to our community." Loise is thankful to be a team member.



Latonya Fields- Mentor Specialist

Latonya is a great mother of 2 beautiful kids named Tyler and Tamia. She is a substitute teacher for the North Bolivar Consolidated School District and Cleveland School District. Latonya is in her third year as a Mentor Specialist for RE>DIRECT. This semester she is taking classes to become a certified pharmacy technician. Latonya is part of C2k Ministries because she loves helping and inspiring young kids by assuring them that they can achieve their goals no matter their circumstances at home or in their community.

STAFF LEADERSHIP



Brenda Jackson- Mentor Specialist

Brenda is the youngest of 13 children. She has three beautiful daughters, one handsome son, and grandson; who are the light of her life. Brenda has an Associates Degree in Elementary Education. She was fascinated with teaching at an early age. As a child, Brenda and her friends would act as if we were students and Brenda always wanted to be the teacher. She had a chalkboard outside her house, and she would ask for the old chalk at school. Brenda loves her job at RE>DIRECT because she likes to teach the children and to see the smiles on their faces when they accomplish their homework assignments. RE>DIRECT also allows her to speak freely about the Word of God, and teach them the importance of knowing Jesus. Lastly, Brenda believes that RE>DIRECT gives children the opportunity to experience activities that she has never seen at any other after-school program. Brenda says "it also helps to have such a pleasant work environment, it feels like a family."

BY THE NUMBERS



Enhancing Trust

Press Release

FOR IMMEDIATE RELEASE
September 6, 2017

FOR MORE INFORMATION CONTACT:
Dan Busby, President
1-800-323-9473
Dan@ECFA.org

C2k Ministries Accredited by National Financial Accountability Organization

MOUND BAYOU, MS – The ECFA (Evangelical Council for Financial Accountability) announced today the accreditation of C2k Ministries of Hartland, WI.

ECFA accreditation is based on the [ECFA Seven Standards of Responsible Stewardship™](#), including financial accountability, transparency, sound board governance and ethical fundraising.

[C2k Ministries](#) joins a growing number of Christ-centered churches and ministries across America, supported by over 27 million donors that have earned the right to display the ECFA seal. When an organization is accredited by ECFA, it demonstrates its willingness to follow the model of biblical accountability.

“We are pleased to accredit a ministry committed to help students develop educationally, socially, and spiritually through a holistic after-school program,” said Dan Busby, president of ECFA.

Founded in 2012, C2k Ministries (www.c2kministries.org) provides tools and resources to those that struggle academically, socially and spiritually to help them overcome their challenges and become a successful and productive contributor in society.

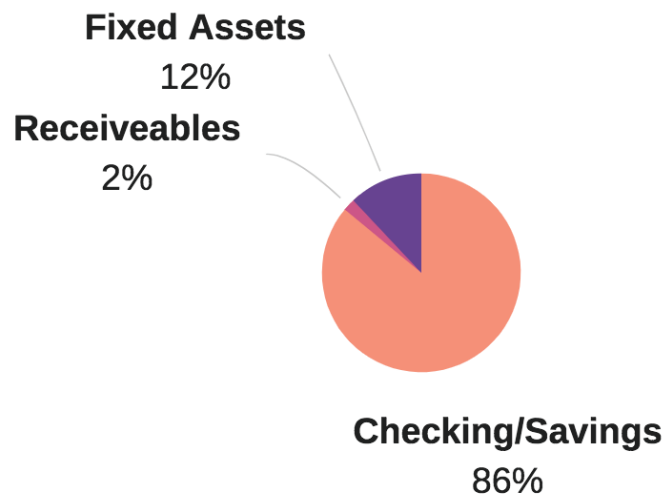
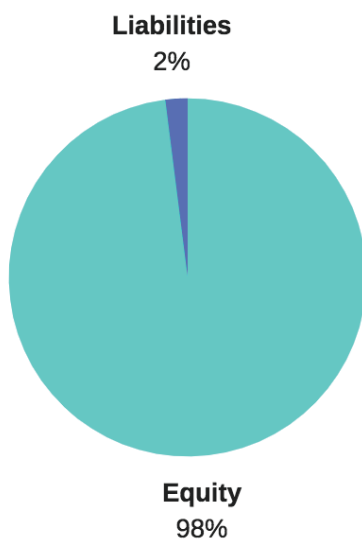
To learn more about C2k Ministries and their stewardship opportunities, visit [ServantMatch@](#), ECFA’s program that matches God’s servants with the stewardship options of ECFA members based on ministry sectors and categories. It is ECFA’s newest online feature that allows you to quickly and easily find giving opportunities.

ECFA, founded in 1979, provides accreditation to leading Christian nonprofit organizations that faithfully demonstrate compliance with the ECFA Standards pertaining to financial accountability, fundraising and board governance. For more information about ECFA, including information about accreditation and a listing of ECFA-accredited members, visit www.ECFA.org or call 1-800-323-9473.

###

Our Balance Sheet (as of June 30, 2018)

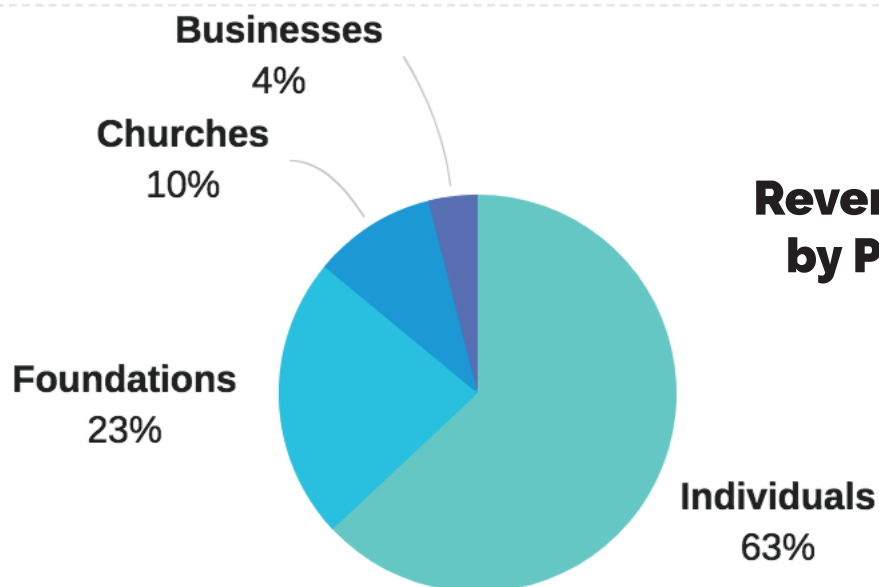
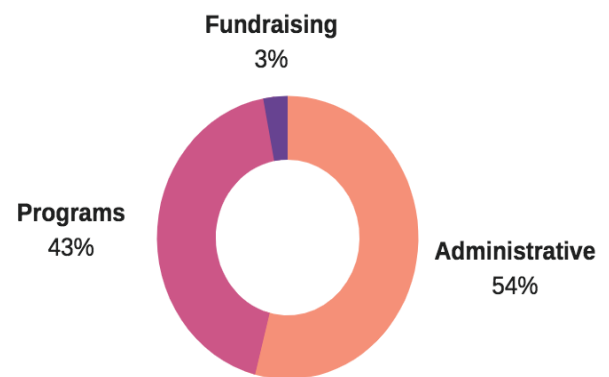
	Jun 30, 18
ASSETS	
Current Assets	
Checking/Savings	47,896.43
Accounts Receivable	936.40
Other Current Assets	-2,555.00
Total Current Assets	46,277.83
Fixed Assets	9,050.00
TOTAL ASSETS	55,327.83
LIABILITIES & EQUITY	
Liabilities	
Current Liabilities	
Accounts Payable	-0.10
Other Current Liabilities	768.34
Total Current Liabilities	768.24
Total Liabilities	768.24
Equity	54,559.59
TOTAL LIABILITIES & EQUITY	55,327.83



Revenue & Expenses (as of June 30, 2018)

2017-2018 REVENUE	
Total Revenue	\$147,418.32
2017-2018 EXPENSES	
Administrative	\$53,810.40
Programs	\$42,386.56
Fundraising	\$1,774.96
NET INCOME	\$49,446.40

Expenses by Percentage



Revenue Sources by Percentage

Changing Generations

The story of Latasha Sanders

Meet Latasha, a bubbly fifth-grader who loves hot wings and cookies and cream ice cream. Latasha lives with her mother, who never finished high school. Latasha reads any notes that are sent home to her mother and helps fill out all forms that need to be completed. When her mother receives text messages, Latasha is the one who reads them and replies.



Latasha first became involved in RE>DIRECT in January 2016; her uncle removed her from the program after about two weeks because he "didn't think it was helping." That Spring Latasha passed the 3rd Grade Reading Assessment; however, the school chose to retain Latasha due to her failing grades.

In the fall of 2016, Latasha re-enrolled in RE>DIRECT while she was in 3rd grade for the second time. We explained to Latasha and her family that our program is not a quick-fix solution. Instead, RE>DIRECT uses a long-term approach and works with students to make lasting change in their lives. We told Latasha that if she gave us 100% effort, she would see a difference in her grades. We also told Latasha that we would be here to support her and cheer her on every step of the way. By the end of the 2016-2017 school year, we saw a real change in Latasha's grades.

When Latasha moved up to 4th grade, she was starting to gain more self-confidence. Her teachers told us that she was beginning to participate and raise her hand in class. Latasha says, "RE>DIRECT helped me a lot. In 3rd grade I was doing bad... when I passed 3rd grade and went to 4th grade, I was doing great. I was making 100's, A's, & B's." As a 4th-grader, Latasha often outperformed her RE>DIRECT peers in math. She was the only student to achieve multiplication fact mastery last school year! Latasha understood the material so well that she began to help one of her neighbors with their math homework when she got home from RE>DIRECT each night.

Now a 5th-grader, Latasha continues to show us just how dedicated she is to do her best in every situation. She is eager to take on more responsibilities and is setting an example for her peers in every way.



ministries, INC

AN ENGINE FOR SPIRITUAL AND SOCIAL CHANGE

Making a difference in the lives of kids in the
heart of the Mississippi Delta.



For more information please visit our website

www.lovecame down.com